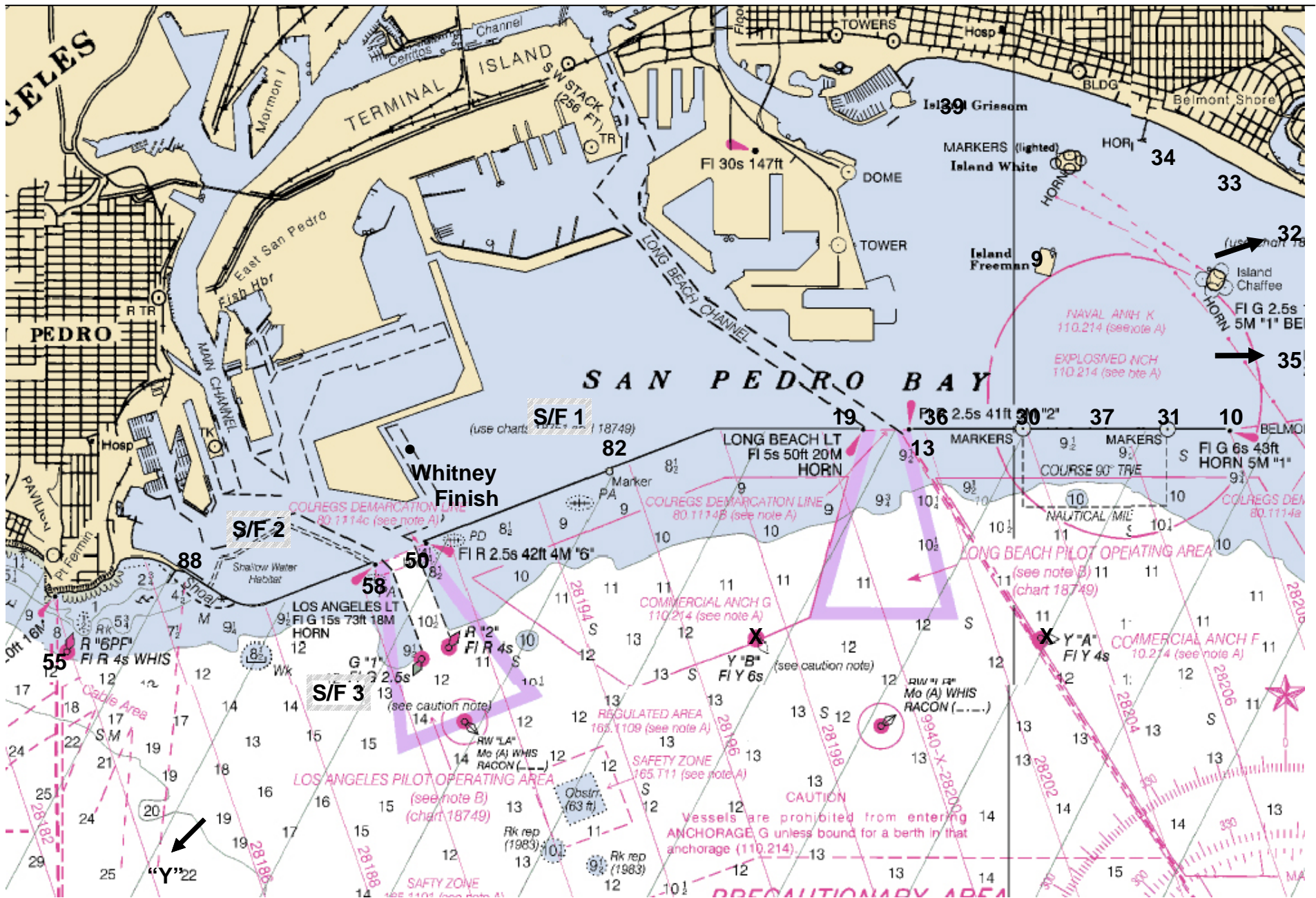


LOS ANGELES YACHT CLUB RACE COURSE CHART NO. 2014-1



NOT TO BE USED FOR NAVIGATION

1/20/14

LAYC Courses

For Chart 2014-1

Course	Mark 1	Mark 2	Mark 3	Mark 4	Mark 5	Mark 6	Mark 7	Mark 8	Distance
1	S/F 1	50	19	S/F 1					7.5
2	S/F 1	19 (S)	50 (S)	S/F 1					7.5
3	S/F 1	55	S/F 1						8.0
4	S/F 1	13	10	S/F 1					8.5
5	S/F 1	19(S)	88(S)	S/F 1					9.5
6	S/F 1	50	9	S/F 1					10.5
7	S/F 1	9 (S)	50 (S)	S/F 1					10.5
8	S/F 1	88	82	88	S/F 1				11.2
9	S/F 1	55	19	S/F 1					11.5
10	S/F 1	19 (S)	55	S/F 1					11.5
11	S/F 1	50	10	S/F 1					11.8
12	S/F 1	55	9	S/F 1					14.0
13	S/F 1	55	35	S/F 1					18.4
14									
15									
16									
17									
18									
20	S/F 2	88	82	S/F 2					5.5
23	S/F 2	82(S)	88(S)	S/F 2					5.5
24	S/F 2	88	82	88	S/F 2				6.4
28	S/F 2	88	55	S/F 2					6.8
29	S/F 2	88	9(S)	19(S)	58	S/F 2			12.6
37	S/F 3	55	19	9(S)	19(S)	S/F 3			14.5

Mark Description & Location

S/F 1 Approx. 1.5 NM NE of LA Light

S/F 2 Approx. 1 NM NW of LA Light

S/F 3 Approx. 1.1 NM SSW of LA Light

“Y” Traffic Lane Buoy Yellow "092", approx 7.9 NM at 213° from LA Light

“W” Orange Inflatable Windward of S/F

“L” Orange Inflatable Leeward of S/F

9 Oil Island Freeman

10 East End of Long Beach Breakwater

13 West End of Long Beach Breakwater

19 East End of Middle Breakwater (LB Entrance)

30 Yellow Spar, approx 100 yds N of West Measured Mile Marker

31 Yellow Spar, approx 100 yds N of East Measured Mile Marker

32 Yellow Spar, 1/2 NM NW of West End of the Alamitos Bay Jetty

33 Yellow Spar, 1 NM NW of West End of the Alamitos Bay Jetty

34 Yellow Spar, 500 yds E from the end of the Belmont Pier

35 Yellow Spar, 600 yds W from the end of the Seal Beach Mun. Pier

36 Yellow Spar, approx 100 yds N and 1/2 NM W of W Meas. Mile Marker

37 Yellow Spar, approx 100 yds N of 1/2 mile Measured Mile Marker

39 Yellow Spar, 1/2 NM ENE of Island Grissom

50 West End of Middle Breakwater

55 Point Fermin Whistle Buoy R "6"

58 East End of San Pedro Breakwater (LA Light)

82 Yellow Spar, approx. 1.5 NM at 52° from LA Light

88 Yellow Spar, approx. 150 yds N of Gr. Channel Buoy #3

All Marks rounded to Port unless specified as (S) to Starboard